

Interaction with Powerful Earth and Cosmic Energies

by Dirk Gillabel, 2024

This page is for those who already know that the Earth is imbued with subtle energy, which has been used since time immemorial for many purposes. To that end megalithic stone monuments of various kinds, but also earthen mounds and other shapes, and even pyramids have been built on places where these earth energy currents or vortexes were stronger than elsewhere. I called it subtle energy, but the energies of the earth are actually very strong and powerful, but of a different order or kind than what we use in our electronic age. As the earth whirls around in space, we could also speak of 'cosmic energies'. That is probably where there come in the first place.

The ancients knew all about these energies and used them in practical ways, mainly to enhance the overall well-being of all living beings, humans, animals and plants (agriculture). However there some indications that the earth energies were used by an ancient civilization to generate power for technology.

Some people have been studying the megaliths from a more scientific point of view, at the same time being open minded about effect of human interaction with these energies. We now know that a lot of these ancient structures emit sound waves, resonate with certain sound frequencies, emit electromagnetic waves in the mega and gigahertz range. Some sites emit strong gamma radiation at certain times of year. besides that people always have had spiritual experiences on these sites.

What I am presenting here are several stories I have collected over the years, of energy released from these sites in a burst that impacted the person physically, showing we are dealing with a powerful energies.

I have underlined the relevant parts. Notice the similarities of the effects of these energies.

The first account is from T.C. Lethbridge in his book *Needles of Stone*, published in 1978. Thomas Charles Lethbridge (1901–1971) was a British explorer, archaeologist and dowser.



Tom Lethbridge took his wife and a fellow dowser to Avebury to find the former height of the Obelisk Stone which once stood in an inner part of the southern circle and which was pulled down and destroyed in the seventeenth century.

"We used a 'booster' technique, in which a second dowser - to use a radio analogy - acts as a series amplifier on the signal that the first dowser receives; we thought that the signal would be too weak to be noticed if we didn't do this. We were wrong of course. Using a pendulum in one hand I used my other arm as a pointer to find the former height of the tip of the stone. We did at about seventeen feet; but at the same time we found the 'memory' of the stone's seventh band. It was quite a reaction. I'm not quite sure what happened then since all I remember is jumping back with shock. But my wife who was watching at the time tells me that my arms went out wide and I only just managed to keep upright. My friend went sprawling on the ground about ten feet back from where he started for being the booster he'd caught the full brunt of what I'd managed to dodge. It was several minutes before either of us recovered enough to start work again."

On YouTube channel *Where Did the Road Go? Radio*, host Seriah Azkath interviewed Maria Wheatley about ancient stone circles, Stonehenge gamma radiation at sites, earth energy, dowsing, ley lines, ying and yang water, consciousness alterations, and more. (video link [here](#)).



Maria is a second-generation dowser who is a leading authority on the geodetic system of earth energies. She was taught how to decode and divine the land by her late father, Dennis Wheatley, who was considered to be one of the UK's top Master Dowsers. At 46 minutes in the interview she starts talking about the energy bands of the standing stones and how they interacted with this energy. At 49:20 minutes, she mentions an incident at Stonehenge. She was visiting the site, with her father and a group of people, showing them how to interact with the energy bands of the stones. One of the people was wearing a lot of metal ornaments. When he interacted with with one of the nodal points of one of the stones, he was flown about ten feet away from it.

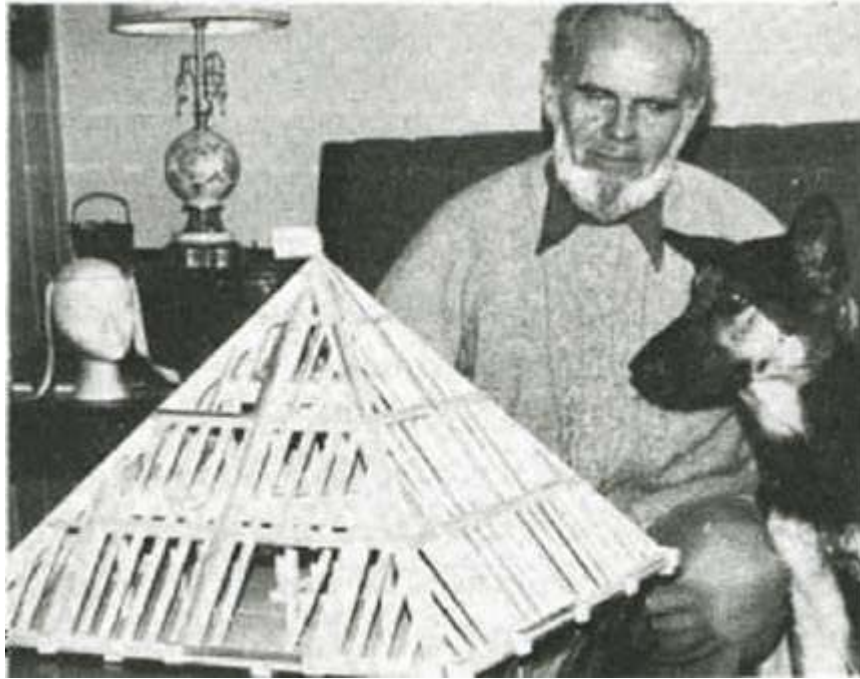
This comes from the website [URU - The Lost Civilisation of Australia](#) . The following text is an excerpt from their book *URU The Lost Civilization of Australia*, written by Rex & Heather Gilroy. In [Chapter 7](#), they write:

"Then in August 1974 a Bathurst district family informed Heather and I of a lengthy stone alignment on their granite-covered farming property. Excited at the immense importance of these stones, we commenced an investigation there that would confirm my theory, that Australia was the birthplace of a highly-advanced stone-age civilization. The stones extended in a line from south to north, measuring from as little at 60cm to one or two meters apart for up to 2km, weighing an average 120lbs [although some were much heavier]. We found that measurements for the varying distances between each stone were repeated at intervals throughout the alignment, suggesting there had been a mathematical purpose behind their placing. We later examined a second alignment 4km to the east reported to us by another farmer. Subsequent measuring showed it to be the same length, on a north-south axis, the measurements between each stone producing much the same results as before.

... The stone of this first alignment [as with the second] extended in a line 40 to 60cm above ground, from south to north one behind the other at varying distances apart. I soon found from measurements that the distances between each stone repeated themselves at intervals, and I suspected then that there was a mathematical purpose behind their placing. At about the halfway point the stones pass through a gap between two huge boulders, themselves one end of an alignment of eight massive stones erected on an north-east south-west axis. It was later found that the south-west end boulder was in alignment with a great boulder atop a nearby rise to the east and a 30m tall pyramid-shaped hill on its western side. Near the eastern base of this hill I found a dolmen. Later dowsing of the site showed the 2km alignment followed a subterranean watercourse. We also later found this to be the case with the second 2km alignment, whose northern end stops short of a pyramid-like granite hill of about 30m height. At its northern end the first [western] 2km alignment stops in an open field. About the half-way point of the second [eastern] major alignment, there is another, composed of much larger granite stones, over a dozen, aligned upon an east-west axis for about 100m and which stops a few meters from the main alignment. I discovered this small alignment during another inspection of the structures in early June 1980. In the course of my investigation I was caught in a sudden cold change of weather, the area soon enveloped in wet mist. I chanced to spot this hitherto unnoticed lengthy row of waist high to taller stones extending east from the 2km alignment among trees and shrubbery and made an inspection. At a point close to the western end of this alignment, I chanced to step between the narrow gap of two large stones, and with my camera bag, and a larger one containing all my usual equipment slung over my shoulder, happened to

place a hand on each of the stones. As I did so, I received a mild electric shock that sent me flying to the ground. Suddenly 'zapped' of energy, I felt exhausted for quite some time thereafter and was unable to continue my investigations for the remainder of that day. I later learnt that megalithic stone alignments have been found to be conductors of natural electricity worldwide. Heather and I had not long confirmed the name of the Australian megalithic civilisation as 'Uru', and now we were asking ourselves how these people were able to trap and harness natural earth electricity, and for what purposes? The majority of Australian megalithic stone alignments, circles and other arrangements are composed of either granite or diorite, the later also a known conductor of natural electricity. Sometimes a stone arrangement is found composed of either of these 'positive' stones and some other 'negative' [ie non-electricity-conducting] stones.

The following is from a lecture given by Les Brown. It was videotaped at the Crystal Symposium in Irving, Texas in 1986. The video is at YouTube [here](#).



Les Brown and a model of his pyramid

Les Brown had built a 30 foot tall pyramid, from wood aluminum and other materials. The four sides were built in layers to collect orgone energy (like an orgone accumulator, as Wilhelm Reich used to built). The pyramid had a copper peak on top.

A pancake coil (magnetic coil of of (double) antenna wire) was placed on the floor with a spike going into the ground and one sticking up to act as a connection point. Strips of sheepskin (an organic conductor since this was believed to be Orgone energy and thus most conductive with organic materials) were cut and tied together. These were hung from a counter-clockwise wire coil hanging from the apex of the pyramid. Les got up on a ladder to one end of a long strand of sheep wool, to the wire coil antenna in the peak. He wanted to connect the strand to the bottom coil, and thus came down the ladder, holding the strand of sheep wool in one hand. When he touched ground, and before he could reach the pancake coil, he got thrown clear across the room for about 20 feet. He lay there a least for five minutes, not knowing what happened. He was in the hospital for several weeks suffering from bruises and fractures and broken ribs.

Les brown also wrote a little booklet on How to Built a Pyramid.

The following text comes from [The Legacy of Marcel Vogel](#).

Marcel Joseph Vogel (1917 - 1991) was a research scientist for IBM's San Jose facility for 27 years. He received numerous patents for his inventions during this time. Among these was the magnetic coating for the 24" hard disc drive systems still in use. His areas of expertise were phosphor technology, liquid crystal systems, luminescence, and magnetics.

In the 1970's Marcel did pioneering work in man-plant communication experiments. This led him to the study of quartz crystals and the creation of a faceted crystal that is now known as the Vogel-crystal. The Vogel-crystal is an instrument that serves to store, amplify, convert, and cohere subtle energies. Marcel's research into the therapeutic application of quartz crystals led him to the investigation of the relationship between crystals and water. He discovered that he could structure water by spinning it around a tuned crystal, altering many of the characteristics of the water and converting it into an information storage system.

Although in most cases it was found that water generated a weak magnetic field, on one occasion a different effect was noted. Normally the effects noted above were attained by circulating water through a Pyrex glass tube coiled seven clockwise turns, around a Vogel-crystal. By reversing the position of the crystal so that the firing tip was pointed upwards, an energy was released that lifted Marcel off the floor and flung him to the wall. He was standing approximately three feet away from the apparatus when this happened. Afterwards his eyes were burned as if from intense radiation.

The seven fold spiral Pyrex tube:



